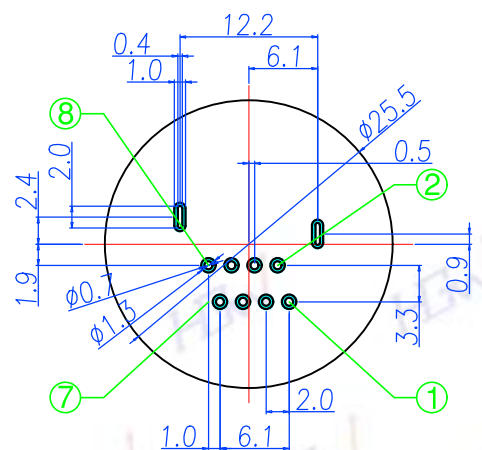


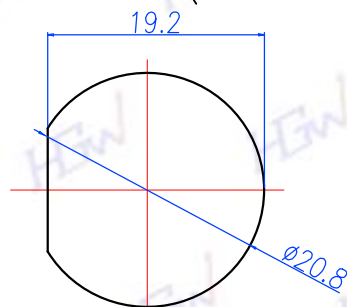
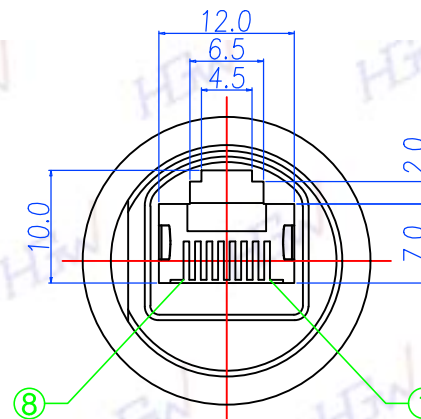
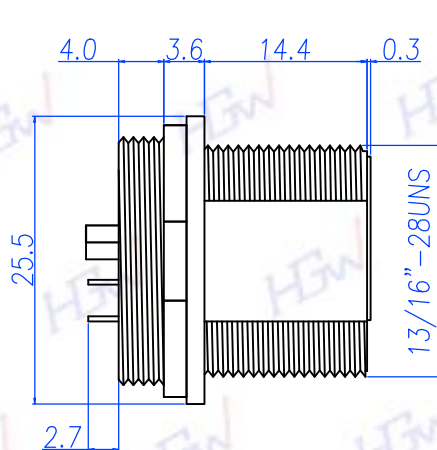


禾剛企業有限公司
HOU GUN ENTERPRISE CO., LTD.

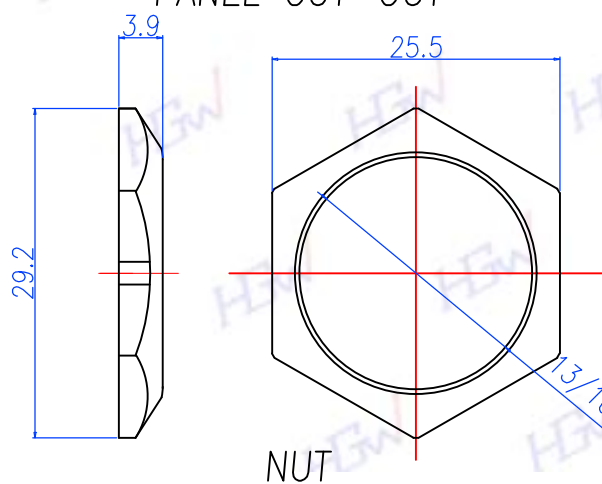
REV	DESCRIPTION	DATE
A		100615



P.C.B LAYOUT(TOP VIEW)



PANEL CUT-OUT



NUT

1.MATERIAL:

- 1-1.HOUSING: PBT UL94V-0; COLOR: BLACK
- 1-2.CONTACT: PHOSPHOR BRONZE
- 1-3.SHELL: Zn ALLOY
- 1-4.GROUND: SUS 301
- 1-5.O-RING: EPDM; COLOR: BLACK
- 1-6.NUT: BRASS
- 1-7.EPOXY BASE: EF400A&EF400B; COLOR: BLACK

2.FINISH

- 2-1.CONTACT: GOLD FLASH MICRO INCHES MIN.
- 2-2.NUT: NICKEL PLATED
- 2-3.SHELL: NICKEL PLATED

3.ELECTRICAL SPECIFICATION

- 3-1.RATED CURRENT: 2A
- 3-2.RATED VOLTAGE: 250V
- 3-3.WATERPROOF: IPX7

4.ENVIRONMENTAL:

- 4-1.OPERATION TEMPERATURE: -40°~85°

TITLE		
RJ45金屬前鍍焊線式		
P/N: HGF2-RJ08P-01		
DWG. NO: HGRJ-8PFPCB		
DR. Dan		UNIT:mm
CH. Jason	SCALE	1:1
AP. Lanny		UNLESS OTHERWISE SPECIFIED TOLERANCES:
REV. A	SHEET 1/1	X ± 0.1 XXX ± 0.03 XX ± 0.05 ANGLE ± 1°